

# The Cell's View of Animal Body Plan Evolution

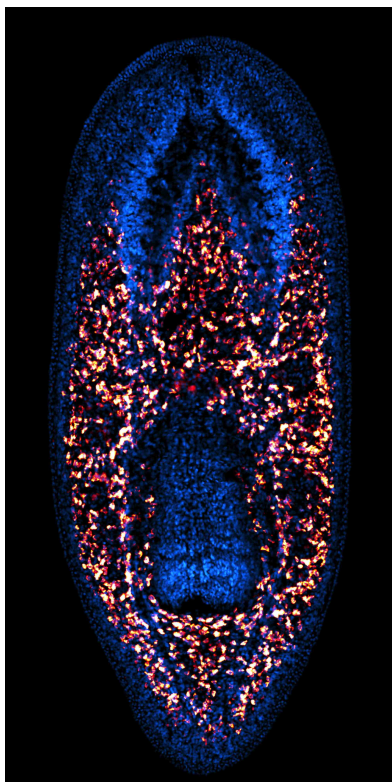
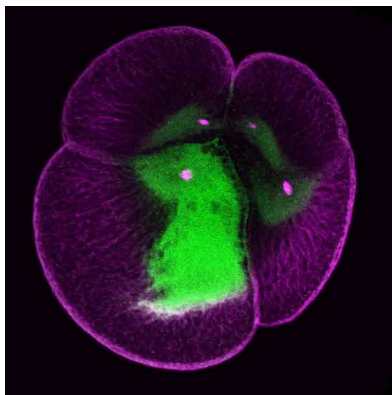
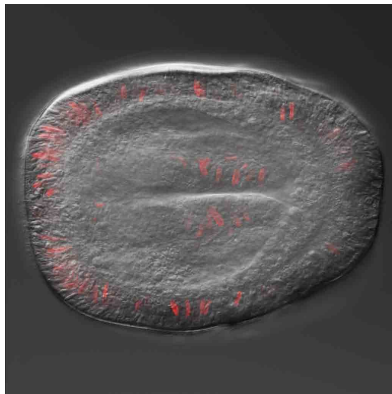
a symposium at the annual meeting of the  
**Society for Integrative and Comparative Biology**

**January 3-7, 2014**

Austin, TX



<http://www.sicb.org/meetings/2014/symposia/cellevo.php>



## Confirmed Speakers

**Sally Horne-Badovinac**, *University of Chicago*

**John Wallingford**, *University of Texas, Austin*

**Ed Munro**, *University of Chicago*

**Jennifer Zallen**, *Sloan-Kettering Institute*

**David McClay**, *Duke University*

**Bob Goldstein**, *UNC Chapel Hill*

**Matt Gibson**, *Stowers Institute*

**Reiko Kuroda**, *University of Tokyo*

**Leslie Babonis**, *Whitney Marine Laboratory*

**Josien van Wolfswinkel**, *Whitehead Institute*

**Alexa Bely**, *University of Maryland*

## Register Now

<http://www.sicb.org/meetings/2014/>



**Abstract Submission Deadline: August 26, 2013**

**Registration Deadline: November 9, 2013**

Abstracts will be considered for posters and talks.  
Funding is available for travel assistance, see website  
for instructions on how to apply.

### Contact the organizers for any questions:

Deirdre Lyons ([deirdre.lyons@duke.edu](mailto:deirdre.lyons@duke.edu))

Mansi Srivastava ([mansi@wi.mit.edu](mailto:mansi@wi.mit.edu))

Mark Martindale ([mqmartin@whitney.ufl.edu](mailto:mqmartin@whitney.ufl.edu))

This symposium is sponsored by the Society for Developmental Biology, the Company of Biologists, the American Microscopical Society, and DEDB, DIZ, DNB, DPCB, DVM divisions of the Society for Integrative and Comparative Biology.