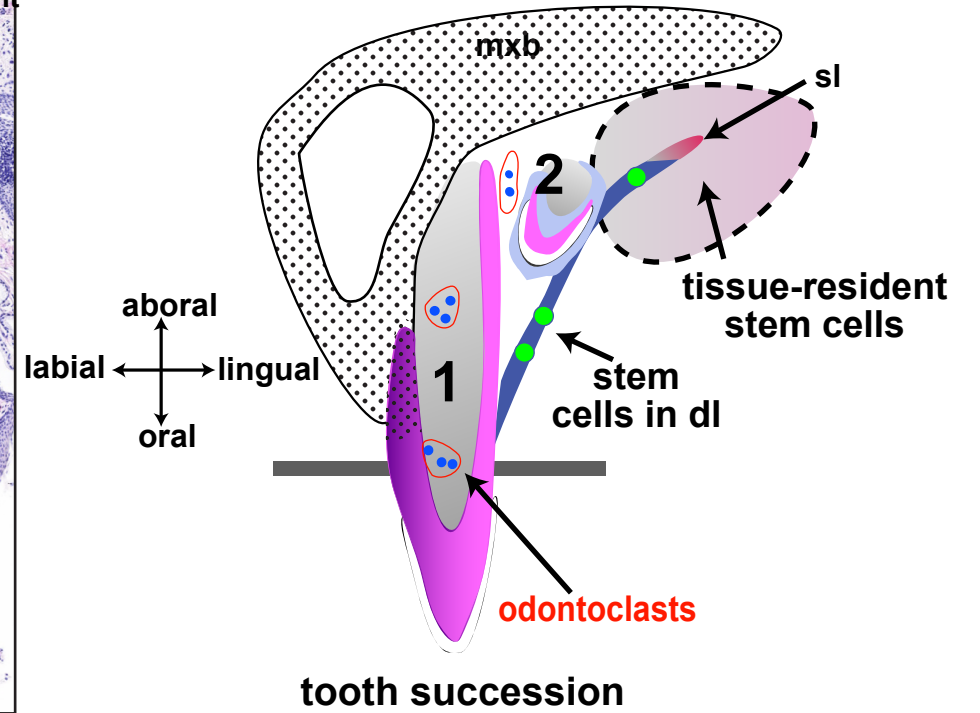
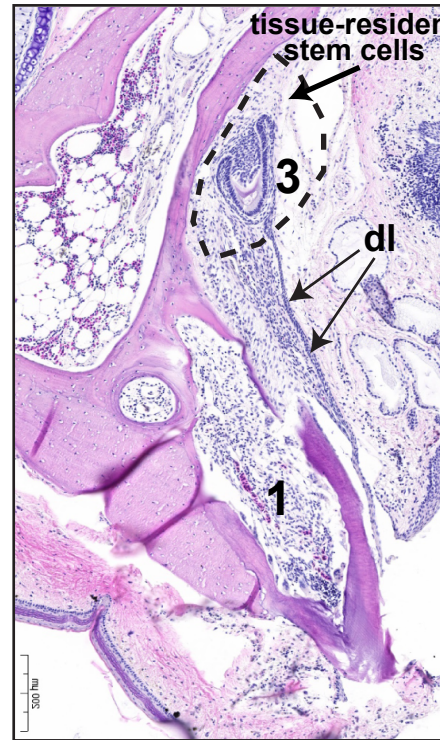
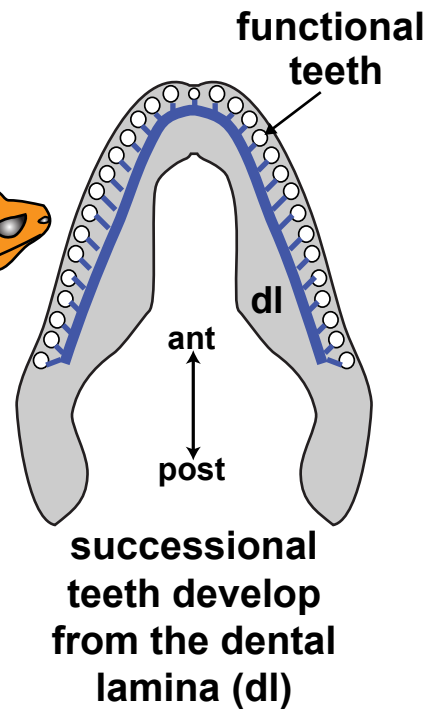
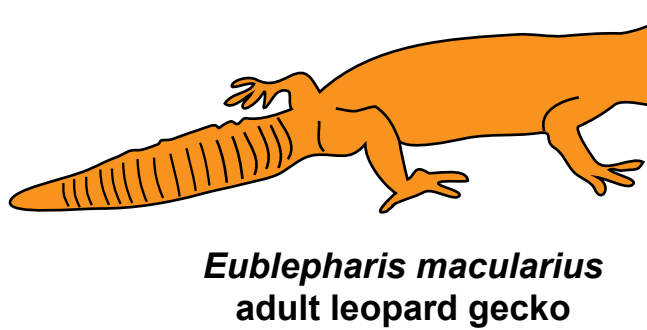
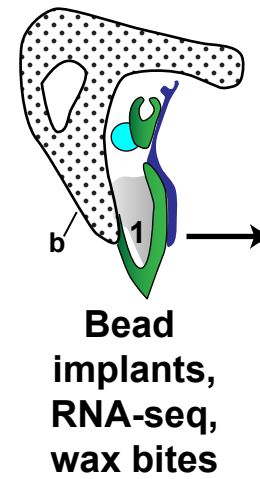
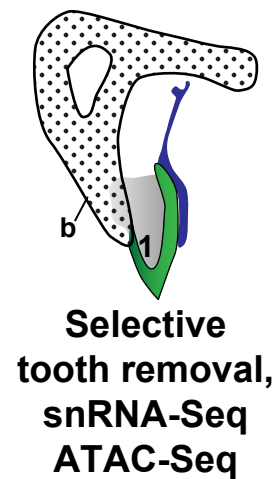
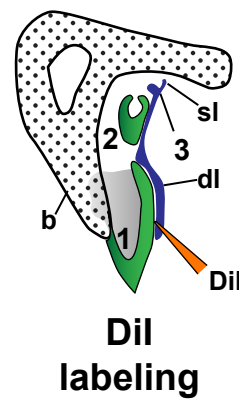
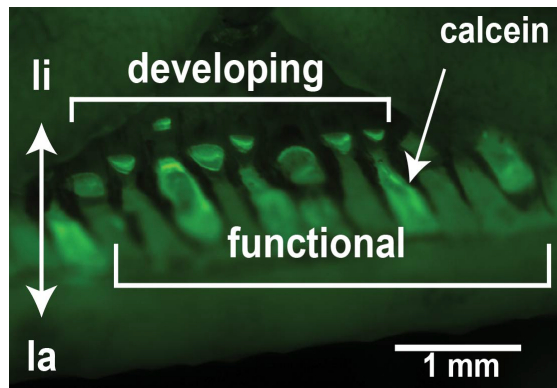


The leopard gecko, an emerging unconventional model organism for organ regeneration in adults  
 Position in Joy Richman's lab, UBC, Vancouver, Canada, joy.richman@ubc.ca

Background



Experiments



- discoveries made on accessible, adult stem cells
- functional tests of signaling pathways
- tests of new model for jaw-wide tooth replacement