



European  
Research  
Council

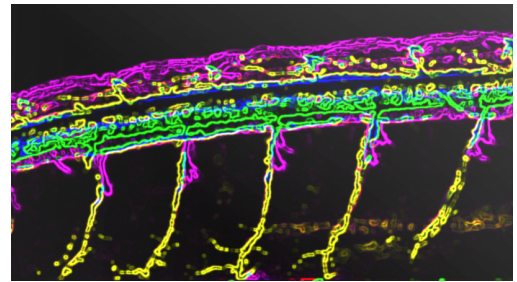
**Bomont laboratory**  
NeuroMyogene institute – INMG-PGNM  
University of Lyon, France

## NeuroFish: « Neurofilaments in health and neurodegenerative diseases »

### Job offers: Post Doctoral scientist & PhD student

We are seeking highly motivated candidates for neuronal cytoskeleton, to work on a project aiming at fueling innovation in fundamental neurobiology and therapeutic development.

**Science.** Major cytoskeletal component of neurons, Neurofilaments (NFs) provide the structural scaffold of axons and exhibit important functions throughout the nervous system (review in Curr Opin Cell Biol 2024: <http://doi.org/10.1016/j.ceb.2024.102326>). Important for physiology, *NF* genes are mutated in several peripheral neuropathies, producing mutant-NF aggregation that is shared by most neurodegenerative diseases in human (review in Front Cell Dev Biol. 2023: <http://doi.org/10.3389/fcell.2023.1275155>). With such fundamental and clinical significance, our project aims at decoding the roles of NFs *in vivo* in a physiological environment, using the zebrafish model. This project has the ambition to decipher the dynamics, regulation and functions of NFs, and to develop new therapeutic avenues for neurodegenerative diseases.



**Profiles.** 2 to 3-year positions for 1 Post Doctoral researcher and 1 PhD student. Mandatory for all profiles: curious, enthusiastic & team player. Background in neurobiology. We want to recruit candidates with COMPLEMENTARY profiles in **zebrafish**, OR **glial cells**, OR **advanced live microscopy** approaches, OR **mathematic modeling applied to biology**. Preferred: expertise in cytoskeleton and/or neurodegenerative disorders. French speaking is NOT a requirement.

**When/how to apply.** **URGENT**: starting date ASAP in 2025. Please send your application in a SINGLE 3 page-long pdf, including your CV, summary of your previous research experiences, and contact information of 2-3 references to: [pascale.bomont@inserm.fr](mailto:pascale.bomont@inserm.fr)

**Where.** Our team is located in the NeuroMyoGene institute at the Rockefeller campus, in the highly dynamic and international city of Lyon, France. Lyon is considered as one of the most attractive metropolises in Europe, with a strong signature in biological science, architecture, & gastronomy.



Link to [Bomont](https://pgnm.inmg.fr/en/bomont/) webpage: <https://pgnm.inmg.fr/en/bomont/>

